

AYC ALL or ONE SERIES

SAILING INSTRUCTIONS 2023

1) ORGANIZING AUTHORITY & KEY DATES

- A) The Anchorage Yacht Club (AYC) is the Organizing Authority (OA) for the AYC ALL or ONE Series.
- B) All races will be governed by the 2021-2024 World Sailing's Racing Rules of Sailing including US Sailing Prescriptions (RRS) and the rules of the MWPHRF except as altered by the **Notice of Race** or the following Sailing Instructions.
- C) Race Schedule:
 - (1) The All or One race series is four races and begins on Saturday June 3rd followed by races on Saturday July 1st, Saturday August 5th, and Saturday September 2nd.
 - (2) Should any of the four races be canceled, then a makeup race shall be scheduled for either Saturday September 9th or Saturday October 7th. Should two or more of the four races be canceled, then both dates shall be used for makeup races.

2) NOTICES AND CHANGES

- A) Any change in the Sailing Instructions or Notice of Race will be posted on the AYC website at least 24 hours before the day that they will take effect.
- B) Oral changes may also be made at the skippers' meeting.

3) STARTING TIMES

Starts will be in the reverse PHRF or pursuit start format. Start times will be given at the skippers' meeting. Skippers' meetings are scheduled at 0900, the beginning of the race event, and located at the Waukegan Port Authority patio (harbor house) at Waukegan Harbor.

4) STARTING AREA

Between the Green 3 buoy and the Waukegan Harbor Light (see mark coordinates below).

5) RACE COURSE

Course direction will be determined at the skippers' meeting. The course is usually a 10 or 13.25 nm course, using the marks listed below (in marks coordinates section). Additional courses may be added during the series.

6) IDENTIFICATION - CHECK IN

Racing yachts shall check in at the skippers' meeting.

7) THE FINISH

Yachts must finish within 100-200 yards West of the Green Buoy #3. Yachts will take their own finish as they pass a line between the green buoy "3" and the white with green striped Harbor Light on the Waukegan pier head. Each skipper is responsible for recording the actual

finish time of their yacht and, if possible, the yacht directly ahead and astern. Submit your finish time to the Race Committee within one hour of your finish or one hour after the AYC Race Officer docks. The AYC Race Officer will be determined at the skippers' meeting.

8) **TIME LIMIT**

The time limit is 6 hours after the last start for all yachts.

No yacht will be scored after 6 hours have elapsed from the time of the last start. Yachts not finishing within 6 hours of the last start will be scored as Did-Not-Finish (DNF). If no yacht completes the course within 6 hours of the last start, then the race is abandoned.

9) **PROTESTS**

The protester must at the first reasonable opportunity: 1) hail the skipper being protested immediately; 2) fly a red (protest) flag; and 3) notify the Race Committee of the pending protest. Protests shall be written on an **official protest form** and given within **one hour** of the Race Officer docking to the Race Committee. If the hearing cannot be held the same day, then the hearing will be scheduled no later than 14 days after the incident. Race results will be re-scored, as necessary, based on decisions of the protest committee.

10) **ALTERNATE PENALTIES**

Refer to the 2021-2024 World Sailing's Racing Rules of Sailing concerning penalty turns. A boat may clear itself by a one turn (Touching a Mark) or two turns (When Boats Meet) penalty after getting well clear of other boats as soon after the incident as possible. If the boat caused injury or serious damage or gained a significant advantage in the race or series by her breach, then her penalty shall be to retire.

11) **WITHDRAWING**

Yachts Withdrawing (WDR) from the race are required to notify the Race Committee.

12) **AUXILIARY POWER**

Yachts are considered to be racing after the preparatory signal, for their respective starts, and must be under sail power only, at the time the preparatory signal is made. (four minutes prior to their section's start)

13) **WHISKER POLES (RRS 55.2)**

Only one whisker or spinnaker pole (length not to exceed the "J" measurement on the PHRF certificate) shall be used at one time. When in use it must be attached to the foremost mast and may be carried on the same side or the opposite side of boat on which the boom has been set.

Poles that can be extended beyond the "J" length must be banded to indicate the maximum proper length. No handheld poles or devices allowed.

14) **HEAD SAILS**

Spinnakers (asymmetrical spinnakers, cruising spinnakers, bloopers or gennakers) are only

allowed by boats registered within an AYC spinnaker section. Boats may use a tight-luffed staysail provided that 1) staysail dimensions do not exceed the headsail dimensions appearing on the boat's MWPHRF certificate; 2) the sail is flown in the spirit of a staysail, being tacked on the boat's centerline and aft of the headstay; and 3) no other MWPHRF regulations are violated. On leeward legs, two headsails may be used by JAM section boats, but only one headsail can be hoisted in the headfoil.

15) SKIPPERS MEETING

Meetings are scheduled at 0900 the beginning of the race event at the Waukegan Port Authority patio (harbor house) at Waukegan Harbor.

16) INSPECTION

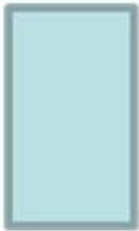
- A) All yachts will be subject to inspection, at any time. If any requirement of the **Notice of Race and Sailing Instructions** are not met, then the yacht will be disqualified.
- B) All Coast Guard safety requirements must be met by each yacht. For yachts with three or more crew members, AYC recommends that a PFD be worn by each crew member.
- C) **Each yacht must carry a VHF marine radio telephone** with at least channels 6, 16, 22, 69 and WX. Channel 69 will be used for required reporting between competitors. All solo racers' radios must be accessible to racers while at the helm. This can either be an adaptation of the permanent radio or a second radio such as a hand-held.
- D) Additional safety requirements for Solo and Double sailors:
 - (1) Each yacht must have a system for self-steering the yacht on a compass course or by apparent wind only. This system must exceed the capabilities of lashing or locking a wheel or tiller.
 - (2) Each crew member must wear a PFD when the yacht is away from the dock.
 - (3) Each yacht must have a system such as jack lines, running from near the cockpit to the foredeck, so that the crew can move from the cockpit to the forestay without disconnecting the safety harness.
 - (4) On double-handed yachts, each crewmember must have a safety harness properly fitted and worn at all times when not below decks. Any time a crewmember leaves the cockpit, they must be connected to the jack line. Solo racers must be hooked to the jack line at all times while above deck.
 - (5) Each yacht must have a system for re-boarding in place at all times. This may include looped lines or a ladder.

17) MARK COORDINATES

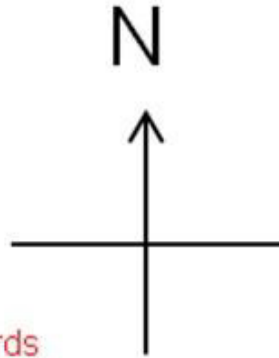
Buoy Identifier	Latitude (DD MM.MMM)	Longitude (DD MM.MMM)
Green “3” buoy (pin)	42° 21.653' N	87° 47.876' W
SE (south east course mark)	42° 20.262' N	87° 46.307' W
Zion Crib (east day marker)	42° 26.608' N	87° 47.474' W

Turn either direction, within 100 yards
due East, of the Zion Crib Light

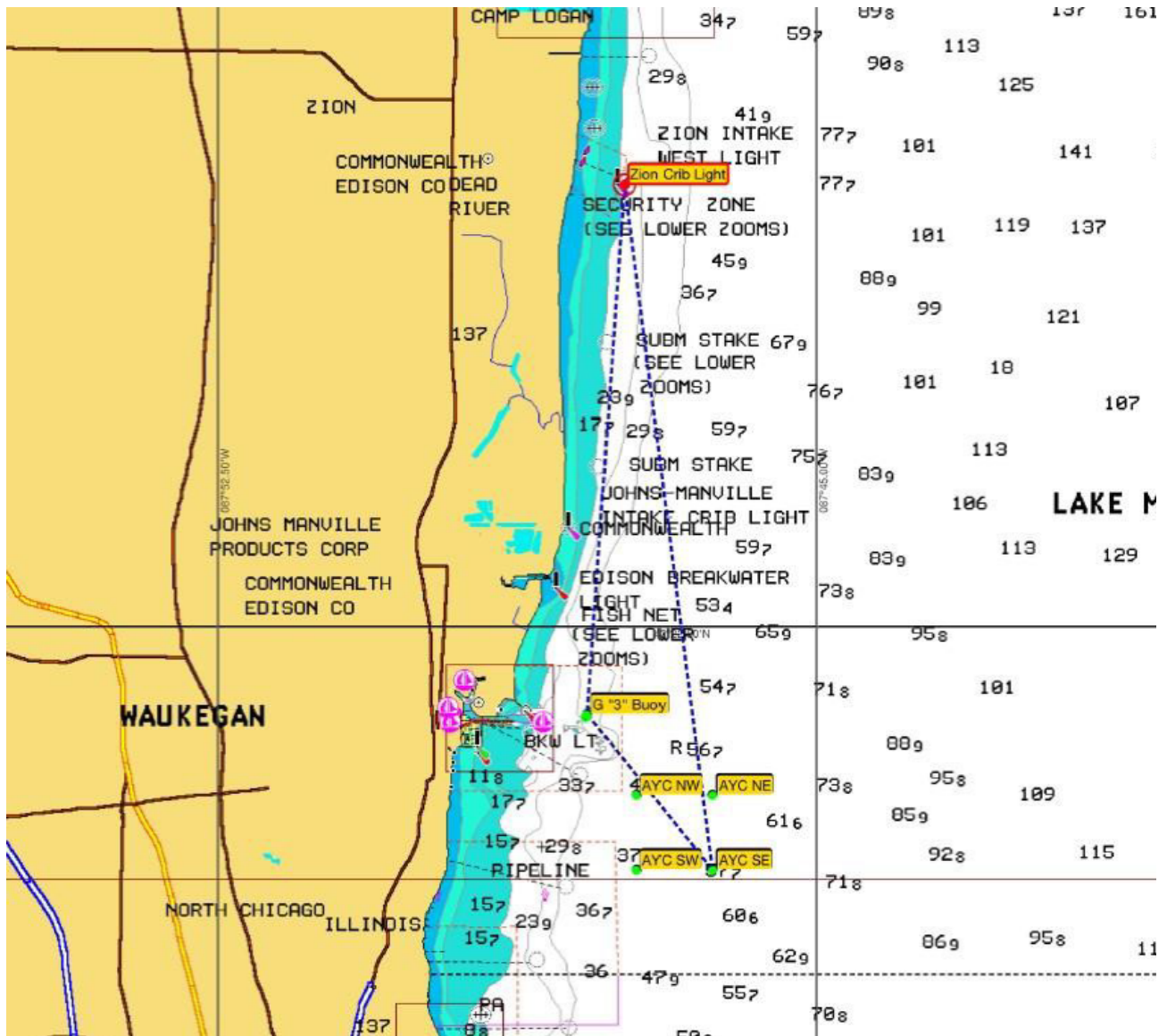
Nuke Plant



Crib Marker



18) COURSE OVERVIEW



Notes:

JAM sections typically sail a ~10 nm course to the turning mark and then directly back to the starting area. SPIN sections *may* elect to sail the longer triangular course shown above if conditions are favorable.

“Nuke Plant” references the old Zion nuclear plant site (it’s no longer a nuclear plant)